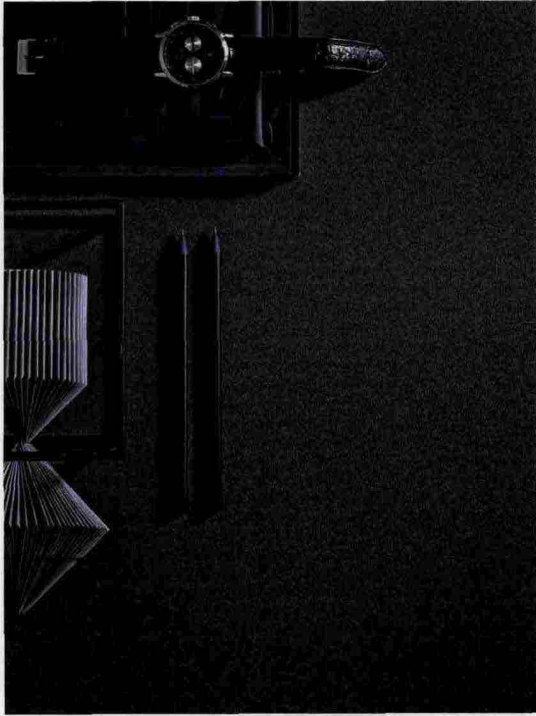


COLLEZIONI TRENDS | WAY OF LIFE

www.collezioni.info



Designer: Lanzavecchia e Wai, Mirage, Cersaie.
© studio Lanzavecchia+Wai con Mirage



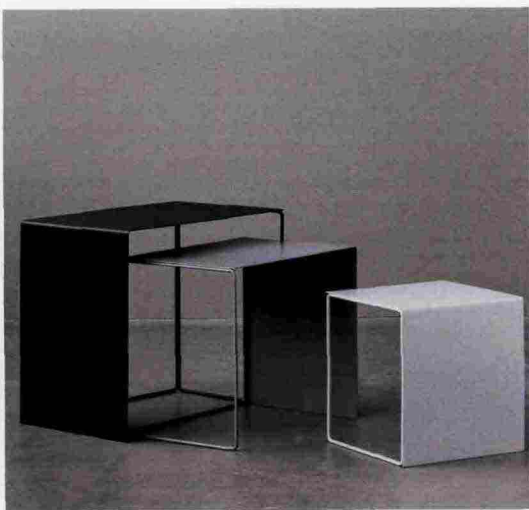
People in Milan



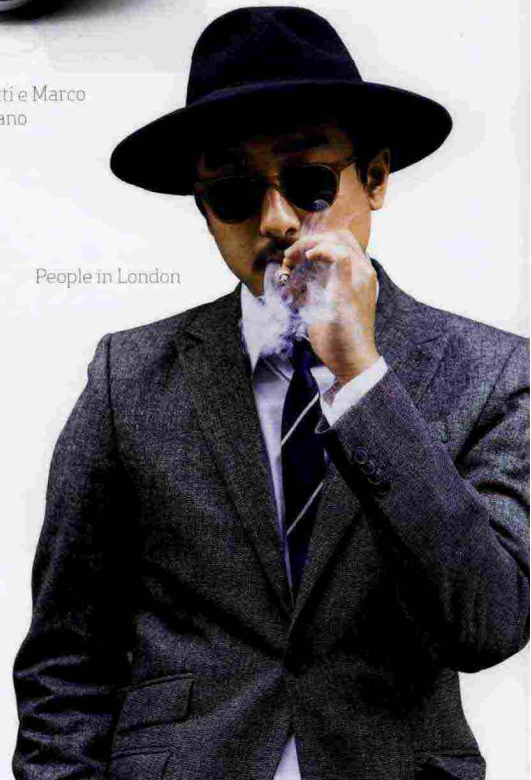
People in Paris



Honey lampade, deigner: Raffaella Mangiarotti e Marco Ravina per Serralunga, Salone del Mobile Milano



CLUSTER tables - set of 3, Designer: ferm LIVING, now!
design à vivre, © ferm LIVING



People in London