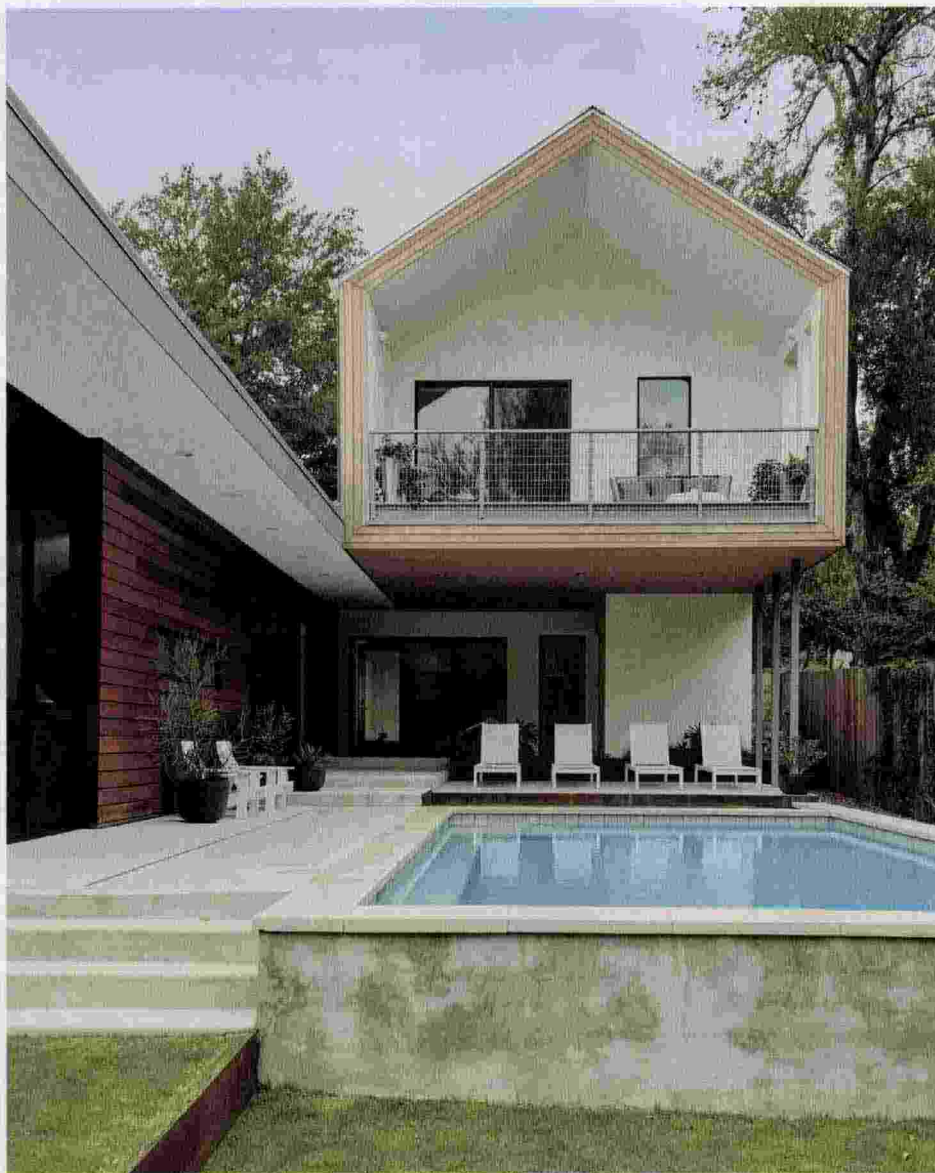


## outside

Architect Burton Baldrige's design for a house in Austin features a cantilevered upper volume with a gabled profile that was in part inspired by the work of Dutch architects MVRDV. It juts out over the patio, outfitted with chaise longues by Harbour Outdoor and Adirondack chairs by Loll.



TEXT BY  
Allie Weiss  
PHOTOS BY  
Jack Thompson

PROJECT  
Burford Place  
ARCHITECT  
Baldrige Architects  
LANDSCAPE DESIGNER  
Studio Balcones  
LOCATION  
Austin, Texas

## Gable Game

Toying with a conventional form, an architect designs a modern house meant for alfresco entertaining.

Amid nondescript bungalows, countless construction sites bearing boxy building frames have come to characterize Austin. The census estimated it to be the fastest growing U.S. city from 2010 to 2013, and this Texas town is booming with new architecture designed to house its burgeoning creative community.

Since forming his practice 10 years ago, architect R. Burton Baldrige has found a niche in Austin's energized building environment. "I like to be able to reduce a design to a concise sentence," he says. "If you can't immediately decide what we're trying to do in a limited number of words, it's going to be muddled when we're >

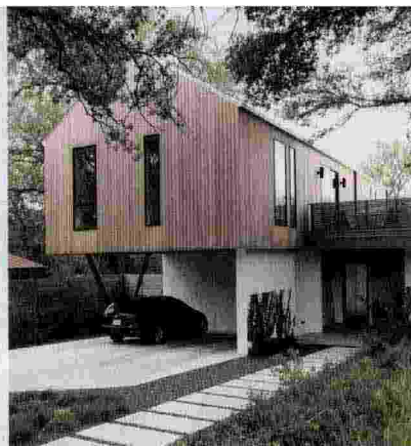
outside

finished." His office building, a white cube with slim cutout windows, sums up the firm's bold and clear style.

The house that Baldrige designed for Matt Parkerson and Katie King in the Zilker neighborhood—one of the destinations for the city's young, eclectic residents—employs a similarly strong gesture. A gabled upper level, wrapped in vertical grain pine, cantilevers toward the street. Wanting to do a spin on a common building form in Austin (two boxes stacked together, the go-to profile for modern construction in the area), Baldrige decided to add a contemporary interpretation of the traditional gable. Matt and Katie, building their first custom home after years of living in a nearby spec house, purchased new but lacking any personal details, were delighted. "They were expecting a flat-roofed building with a modern form," Baldrige says. "I showed them what I really liked; it was like a child's drawing of a house. They were completely in."

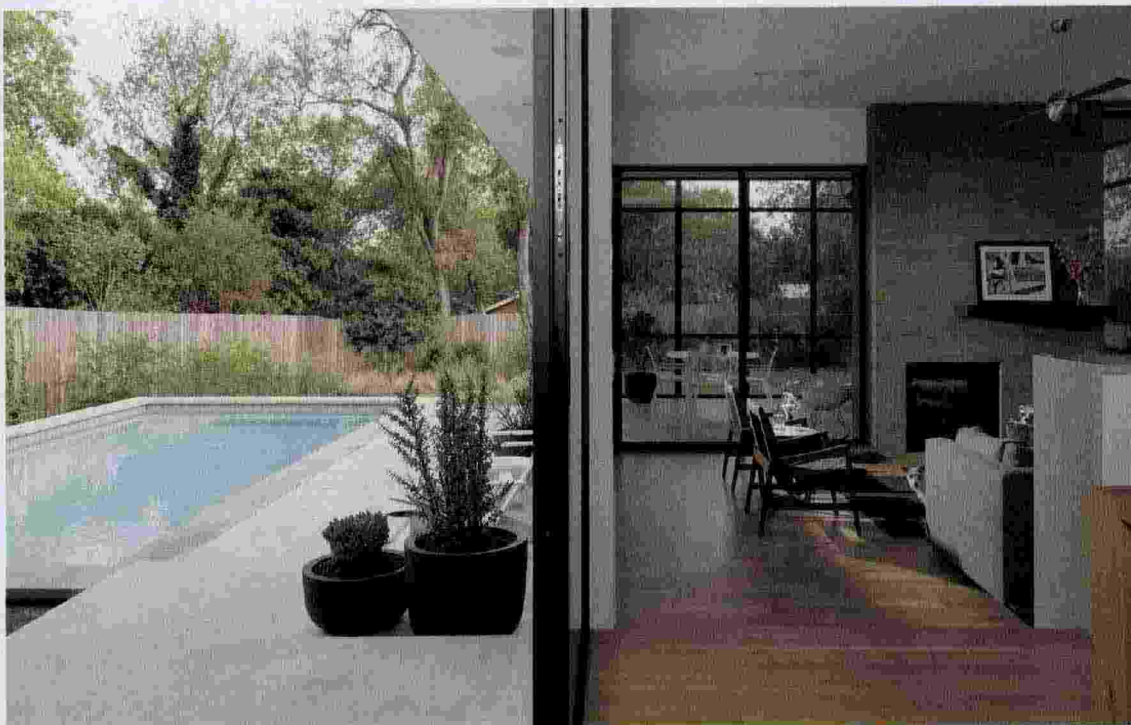
The upper level only overlaps with the first floor over 415 square feet, framing the outdoor spaces and setting the tone for the house. In front, it hovers over the driveway, doubling as a carport. In the backyard, it covers a patio, which the residents and their dogs, Peanut and Hugo, use year-round. The cantilever is a boon in summer, ensuring that a patch of shade can always be found.

Matt, a political consultant, and Katie, the head of sales for the city's South by Southwest Interactive festival, wanted a house with multiple opportunities for gathering, both indoors and out. "We have lots of friends, and we don't have children, so we like to hang out and entertain," Katie says. The >



Narrow windows facing the street help create privacy on the upper level (above). A double-sided fireplace serves as a way to unite the screened-in porch to the house's main, open-plan living area (below).

**"A lot of people coming [to Austin] are creative, visual people. That's changing the architecture that you're seeing." —Katie King, resident**



outside



couple requested a swimming pool and a screened-in porch—the first a solution for Austin’s unbearably hot summer days, and the second to keep out its rampant mosquitos.

Baldrige’s design casts the ground floor as a seamless loop of public spaces, unveiling countless options for indoor/outdoor living. While Matt and Katie prepare a make-your-own taco bar in the kitchen, they can keep an eye on their guests as they sit in the living room or lounge in the sun on the patio. When they don’t have company, the couple can eat breakfast on the porch while their dogs run on the lawn. “Burton really knocked it out of the park in terms of creating outdoor spaces,” Katie says. Adds Matt: “He took it to another level, and we were like, ‘Wow, that’s a lot of outdoor space!’”

Down the line, the duo plans to add a grill and a wet bar, to fully transform the house into a multifunctional entertaining machine. But for now, they are enjoying being able to call the striking new home on the block their own. “I think it sits within the neighborhood, even though it’s unapologetically modern,” Matt says. “It’s not too overwhelming for the existing area. It’s a hair weird almost, and we really like that.” □



A covered deck off the master bedroom with a Huron sofa by West Elm provides another spot to take in the city’s pleasant days (top). Baldrige wanted the porch (above) to feel like

another room. “When you try to make screened porches look like they’re outside, [I think] they look terrible, so we chose to make it actually be a part of the house,” he says.

**“When you’re out back, it doesn’t feel like you’re in downtown Austin.” —Katie King**

## 130 Gable Game

**baldridgeARCHITECTS**

[baldridge-architects.com](http://baldridge-architects.com)

**Studio Balcones**

[studiobalcones.com](http://studiobalcones.com)

**Foursquare Builders**

[foursquarebuilders.com](http://foursquarebuilders.com)

**Adirondack chairs by**

**Loll Designs**

[lolldesigns.com](http://lolldesigns.com)

**Piano Sun chaise longues**

**by Harbour Outdoor from**

**AllModern**

[allmodern.com](http://allmodern.com)

**Ball ceiling fan by Modern Fan**

**Company from YLighting**

[ylighting.com](http://ylighting.com)

**Lounge chair by Jens Risom**

**for Knoll, and Cup planters**

**by Naoto Fukasawa for**

**Serralunga, both from Design**

**Within Reach**

[dwr.com](http://dwr.com)

**Huron sofa and Pebble table**

**from West Elm**

[westelm.com](http://westelm.com)