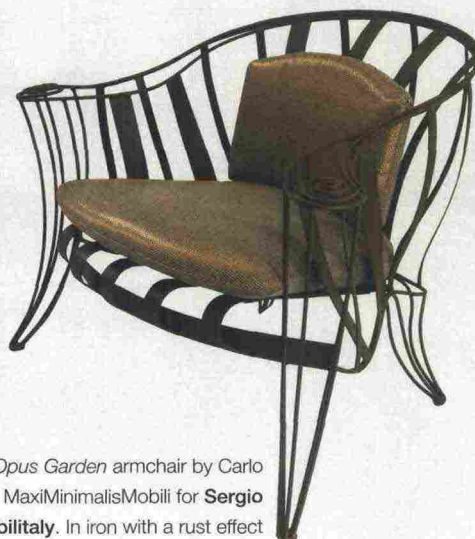


| design |

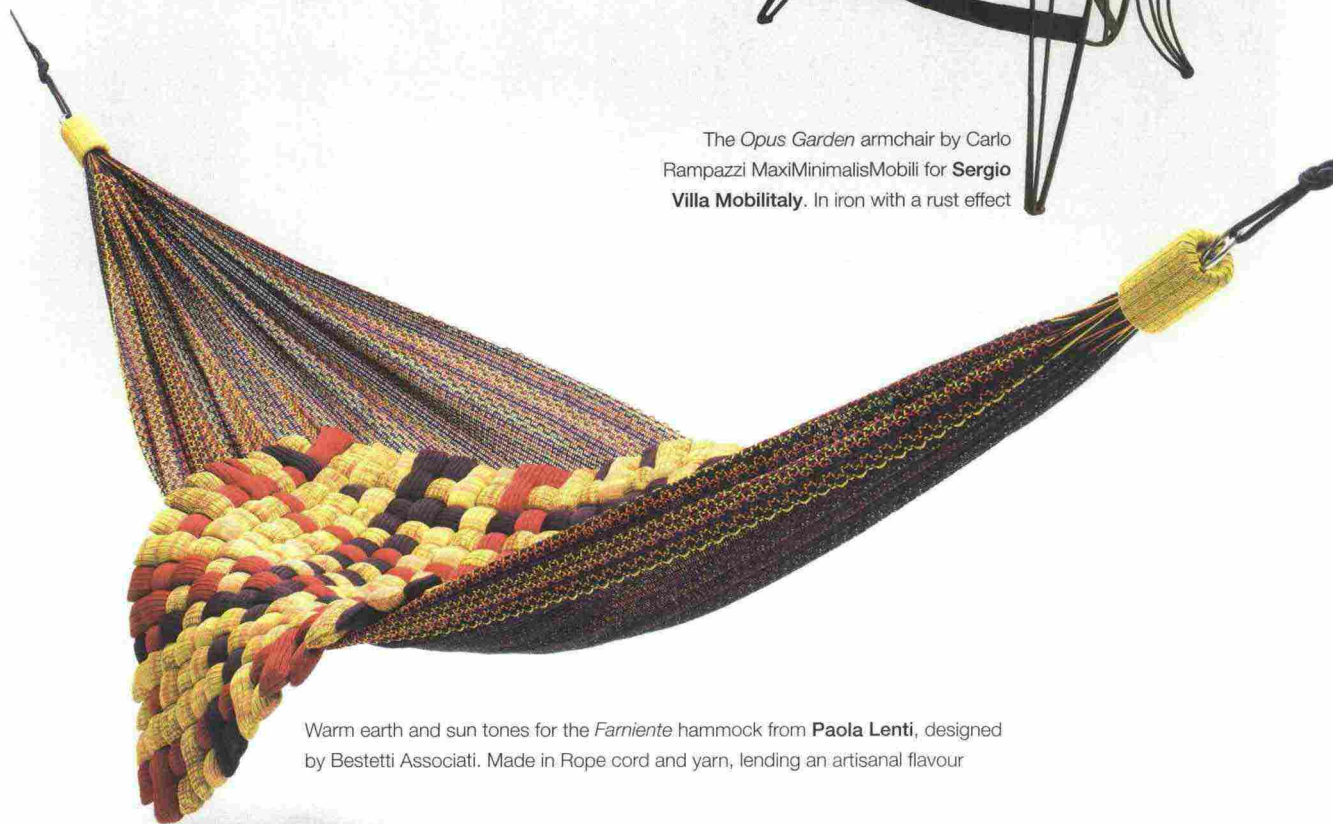
# In full sunlight

Maria Clara Caglioti

The desire to rediscover our links with nature is increasingly strong. By reinventing shapes and researching new materials, outdoor furniture is renewing the pleasure of al fresco living



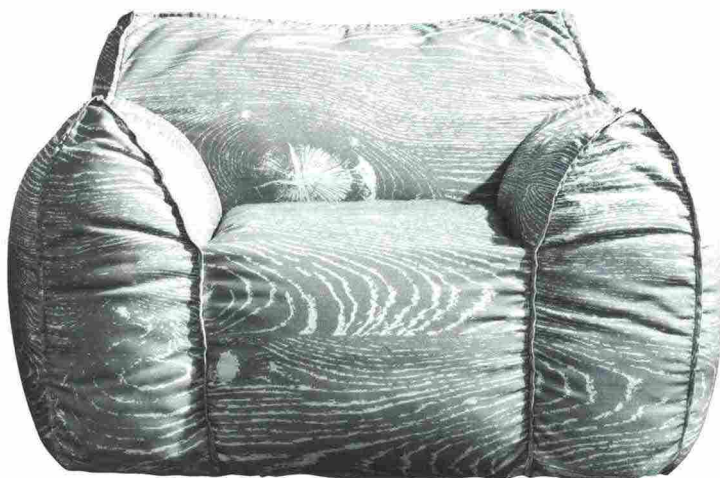
The *Opus Garden* armchair by Carlo Rampazzi MaxiMinimalisMobili for Sergio Villa Mobilitaly. In iron with a rust effect



Warm earth and sun tones for the *Farniente* hammock from Paola Lenti, designed by Bestetti Associati. Made in Rope cord and yarn, lending an artisanal flavour

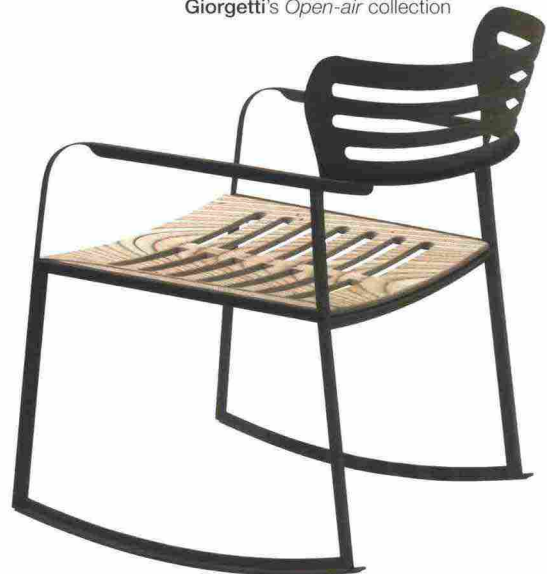


The *Essenza* double lounge bed with canopy by **Ethimo**, for enjoying the open air and light in a private space. Natural teak and brushed steel



The softness of a lounge chair for the *InOut 419* garden armchair, designed by Paola Navone and produced by **Gervasoni**. The digital print water-repellent fabric echoes wood grain

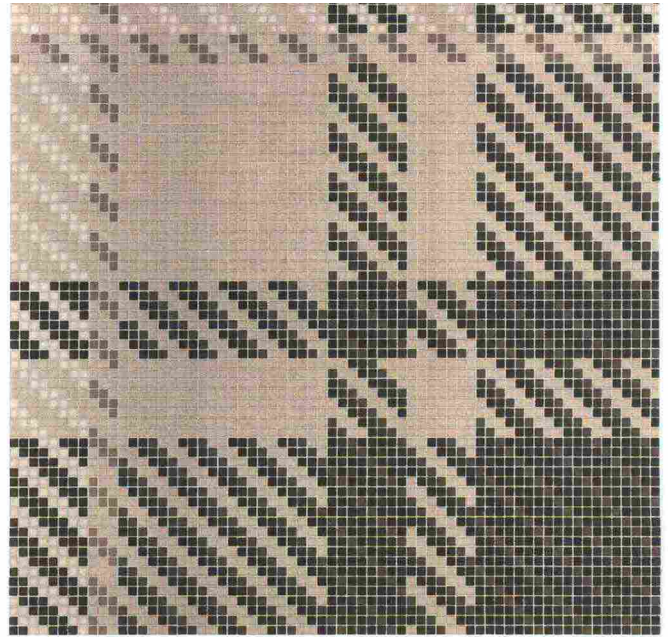
Chi Wing Lo's graceful minimalism has created the steel and birchwood *Gea* rocking chair from **Giorgetti's Open-air** collection



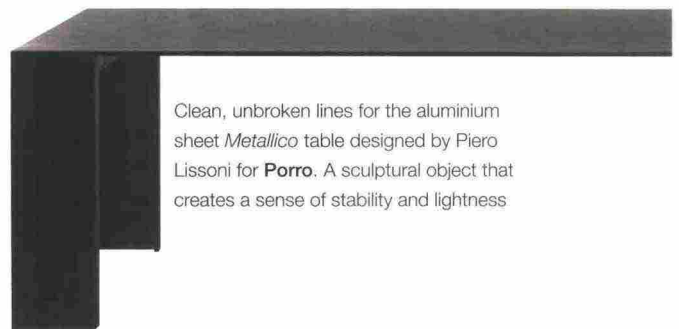
WONDER WORLD | 129

| design |

In the glass mosaic pattern *Philip* from the *Opus Romano* collection by **Bisazza**, Ferruccio Laviani recalls the weft of traditional Scottish tartan



The steel *Thor* chair and stool by Chiaramonte/Marin for **Emu**. Their lines recall a traditional "peasant" style and the way the elements are put together is inspired by artisanal methods



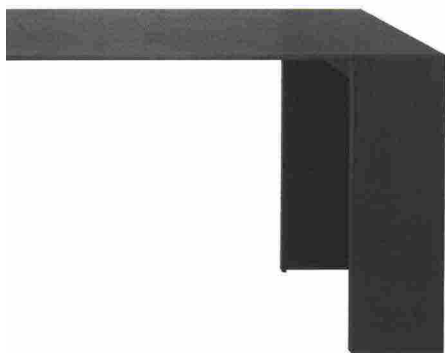
Clean, unbroken lines for the aluminium sheet *Metallico* table designed by Piero Lissoni for **Porro**. A sculptural object that creates a sense of stability and lightness



Generous seats with soft cushions reveal the comfort of the *Purple* modular divan from **Potocco**, designed by Marco Viola Studio



Drawing inspiration from the moulds used by the construction industry, Patricia Urquiola has designed Cassero vases for **Serralunga**. The material, too, recalls the appearance of cement



Curved shapes emphasised by contrasting colours are the theme of the *Arco* series created by Martino Gamper for **Moroso**, which also includes this hanging chair



The unusual elliptical shape of the *Arena* day-bed from **Roda** by Gordon Guillaumier is an invitation to versatile, informal relax